

Instruction Guide 6

POLISHED PORCELAIN

Highly fired, machine polished, full bodied clay tiles.

Mechanically polished porcelain will normally require a certain level of care. The following instructions are a guide to help ensure that your polished porcelain surfaces will remain protected and easy to clean for many years.

PLEASE NOTE: Before grouting wash surfaces well with LTP Grimex and once clean and thoroughly dry, apply at least one coat of LTP MPG Sealer. This treatment will assist with the removal of residual grout and protect the surface of the tile.

THE 3 STEP INSTRUCTION OVERVIEW (see page 2 for more information)

LTP Grimex

Coverage 1 litre/50m²

1



INITIAL CLEANING OF NEWLY INSTALLED SURFACES IF REQUIRED (used surfaces see page 2).

LTP GRIMEX: Cleans and removes factory wax residues, grease, dirt and grime.



Dilute LTP Grimex 1: 4 with water.



Apply and agitate with an emulsifying pad or scrubbing brush. Under floor heating must be off.



Rinse well with clean water.



Use LTP Grout Stain Remover to clean off any hard to remove residual grout.



Allow the surface to dry.

EQUIPMENT: Bucket, mop, scrubber or scrubber dryer machine if available.

LTP MPG Sealer

Coverage 1 litre/20m²

2



PROTECT AGAINST STAINS (for more information see page 2).

LTP MPG SEALER: Invisible finish – protects against water, oil, grease dirt, grime and aids maintenance.



Surfaces must be clean and dry. Under floor heating must be off.



Apply the product to the surface evenly using a sponge, brush or soft cloth.



Buff well to remove excess product from the surface. This should be done whilst the solution is still wet on the surface.



Allow to dry. Do not walk on the surface for at least 3 hours.



Protect from water for 24 hours and do not wash surfaces for at least 3 days.

EQUIPMENT: Bucket, applicator, brush, cloth.

LTP Waxwash

3

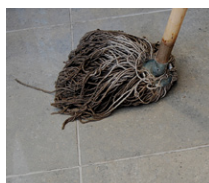


REGULAR MAINTENANCE (for more information see page 2).

LTP WAXWASH: Maintains mechanically polished stone and porcelain surfaces.



Add one capful of product per litre of water in a bucket.



Wash surface with the solution. Do not rinse.



Allow to dry. Do not walk on the surface during drying time – 20 minutes.



If necessary gently buff with a dry soft cloth or buffing machine.

A one litre LTP Waxwash will wash a 20 sq.m floor 40 times.

EQUIPMENT: Bucket, mop.

Always read the product label before proceeding.

NEWLY INSTALLED SURFACES

BEFORE GROUTING: Wash surfaces well with LTP Grimex. Leave to dry and apply one coat of LTP MPG Sealer. This treatment will assist with the removal of residual grout and protect the surface of the tiles.

1 CLEANING AND REFURBISHING – Used and heavily soiled surfaces

- Before sealing the porcelain must be thoroughly cleaned. Old layers of sealer, residues from aftercare products and deposits must be removed from the surface and pores of the porcelain.
- Dilute LTP Grimex 1:3 with water, apply to the surface with a sponge or water brush and leave to sit on the surface of the tiles for as long as it takes for the dirt to release. 5-30 minutes depending upon the level of dirt. NB. For stubborn stains such as pencil marks, and residual mortar use LTP Grout Stain Remover instead.
- Agitate the surface with a nylon pad or scrubbing brush and leave for a further 5 minutes (scrubber machines can be used).
- Continue to scrub while adding clean water. Remove residues from the surface using a cloth or scrubber dryer machine.
- Rinse thoroughly with clean fresh water to remove all remaining residues.
- Allow the surface to dry for a minimum of 12 hours before applying the protective seal.
- For the removal of other types of dirt refer to the table below.

OTHER TYPES OF DIRT

Care product residues, oil, grease and dirt	LTP Grimex or LTP Power Stripper
Tar, wax, paint, bitumen residues	LTP Solvex and then LTP Grimex
Deeply engrained oil stains	LTP Spot Stain Remover and LTP Fullers Earth
Stubborn stains and residual grout	LTP Grout Stain Remover

2 PROTECTIVE SEAL TREATMENTS

- LTP MPG Sealer will render the surface water and oil repellent.
- This product prevents staining, aids cleaning and simplifies the removal of surface stains.
- Provides an invisible barrier of protection that will not greatly alter the surface character.
- There are no health concerns once the product has properly cured.
- The seal is micro porous and so can be used on surfaces that have no damp proof course.
- Suitable for internal and external use.
- If surfaces are properly maintained we recommend touching up the protective treatment every 3-4 years.

NB. Always test the product on an inconspicuous area. Wet or non absorbent surfaces cannot be treated. LTP MPG Sealer is an impregnator which needs to fully absorb. Do not allow the product to dry on the surface. Carefully buff with a soft cloth or machine to remove any excess. Remove unabsorbed impregnating sealer, if left to dry on the surface, by rubbing over with a little more LTP MPG Sealer or white spirit. Some surfaces may be darker after application.

3 MAINTENANCE

LTP WAXWASH (for floors)

Formulated for use on unglazed tiles such as travertine, stone, limestone, slate, terracotta and quarry. Ideal for washing surfaces sealed with LTP MPG Sealer. Use routinely in place of normal detergent.



LTP STONEWASH (for walls)

This gentle surface cleaner is formulated for use on limestone, marble, granite, slate and polished porcelain. Will clean without breaking down and removing protective seals.



NB. Always follow the detailed instructions on the product labels. Avoid using normal detergents or strong bleach cleaners on sealed surfaces as they will gradually remove the protective seal.

This information is offered without guarantee. The material should be used so as to take account of the local conditions and the surfaces to be treated. In case of doubt, the product should be tried out in an inconspicuous area.
© Copyright A.M.Robb Ltd. 2012